

# LANDFAIR<sup>®</sup>

## PERSONAL SHOWER SET WITH HAND SHOWER



- 5 ft. (1.5 m) decorative metal hose
- Traditional five-function hand shower - change function by simply turning the edge of face plate
- Hand shower includes flow restrictor
- Wall elbow included
- 24" adjustable bar with bracket with metal hose
- Maximum hand shower flow rate: 2.0 gpm (7.6 L/min)
- Low hand shower flow rate: 1.8 gpm (6.8 L/min)

### CODES AND STANDARDS

Meets or Exceeds ASME A112.18.1/CSA B125.1

EPA WaterSense<sup>®</sup> Certified

CEC and CALGreen<sup>®</sup> Compliant

### DESCRIPTION

Personal Shower Set

2.0 gpm (7.6 L/min)

1.8 gpm (6.8 L/min)

### PRODUCT NUMBER

D35107780.XXX

D3510779C.XXX

### AVAILABLE FINISHES

Polished Chrome

Carbon Bronze

Brushed Nickel

Platinum Nickel

### FINISH CODE

100

110

144

150

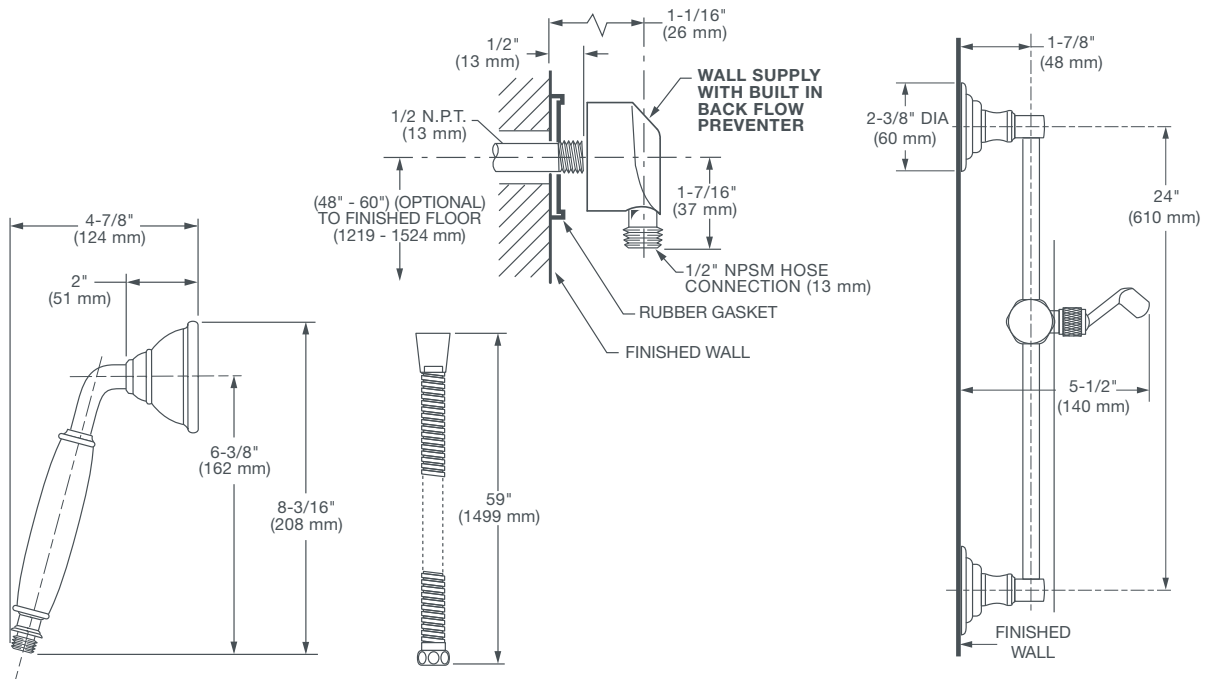
ROUGH-IN DIAGRAM  
SHOWN ON NEXT PAGE

CALGreen<sup>®</sup> is a registered trademark of California Building Standards Commission.



# LANDFAIR<sup>®</sup>

## PERSONAL SHOWER SET WITH HAND SHOWER



**IMPORTANT:** These measurements are subject to change or cancellation. No responsibility is assumed for use of superseded or voided pages.

PART OF **LIXIL**